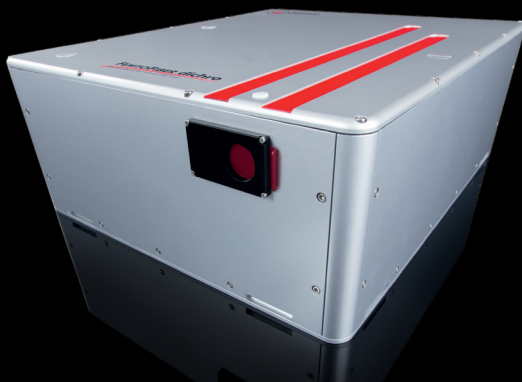


# customized.

Innovative laser systems tailored by our experts to advance your research!



## FemtoFiber Metabolic Imaging

Cutting-edge | Customized | Reliable | Simple & Turn-key

### Laser system for two-photon fluorescence lifetime imaging of NADH and FAD

- Simultaneous two-color emission for direct excitation of NADH and FAD
- Output 1: 780 nm, fixed and Output 2: 820...960 nm, tunable
- Straightforward synchronization to TPSPC electronics
- Power modulation / beam blanking for Output 1 and 2 (optional)
- Simple, turn-key, and compact solution

Contact our experts  
and discuss your  
laser solution.



[www.toptica.com/customized](http://www.toptica.com/customized)

# FemtoFiber Metabolic Imaging

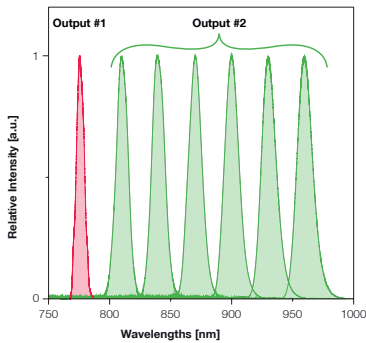


DANGER – VISIBLE AND INVISIBLE LASER RADIATION, AVOID EYE OR SKIN EXPOSURE TO DIRECT OR SCATTERED RADIATION, CLASS 4 LASER PRODUCT, EN60825-1:2014

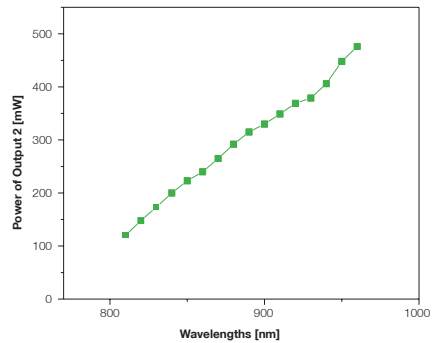
Specifications		
Laser output	Output #1	Output #2
Wavelengths	780 nm* (+/- 10 nm)	820 -960 nm* (tunable)
Power	> 500 mW	> 100 mW (@820 nm) to > 300 mW (@960 nm)
Pulse duration	< 150 fs	< 150 fs (typ. 100 fs)
Repetition rate	80 MHz (others on request)	
Power modulation / beam blanking by AOM	>1 MHz modulation bandwidth (optional)	>1 MHz modulation bandwidth (optional)
Output coupling	Free space	
Cooling	Air-cooled	

\*other wavelengths upon request

Specifications are subject to change without further notice



Typical emission spectrum of Output #1 and broadband Output #2 (linear plot)



Typical emission spectrum of Output #1 and tunable Output #3 (linear plot)