

TOPTICA Photonics, Inc
1286 Blossom Dr
Victor, NY 14564
USA

Phone (585) 657-6663
Fax (877) 277-9897

Email service@toptica-usa.com
www.toptica.com

HighFinesse GmbH
Auf der Morgenstelle 14 D
72076 Tübingen
Germany

Phone +49 (0) 7071-96 8515
Fax +49 (0) 7071-96 8517

Email info@highfinesse.com
www.highfinesse.com



Hints:

- Light must be fiber-coupled into the wavelength meter (collimator and fiber provided with unit)
- 50 - 100µW is sufficient input power. Excessive input power can permanently alter internal gain settings.
- To simplify alignment, couple into Multi-Mode fiber prior to using a Single-Mode fiber

ATTENTION: Install Software BEFORE connecting Device to Computer!

Installing the software for multiple wavelength meters or even two versions for the same meter can lead to driver conflicts. All previous versions of HighFinesse software should be uninstalled prior to installation of the current version.

1 Install Software

Run "Setup.exe"



Express Install: Automatic Installation.
Simply follow prompts

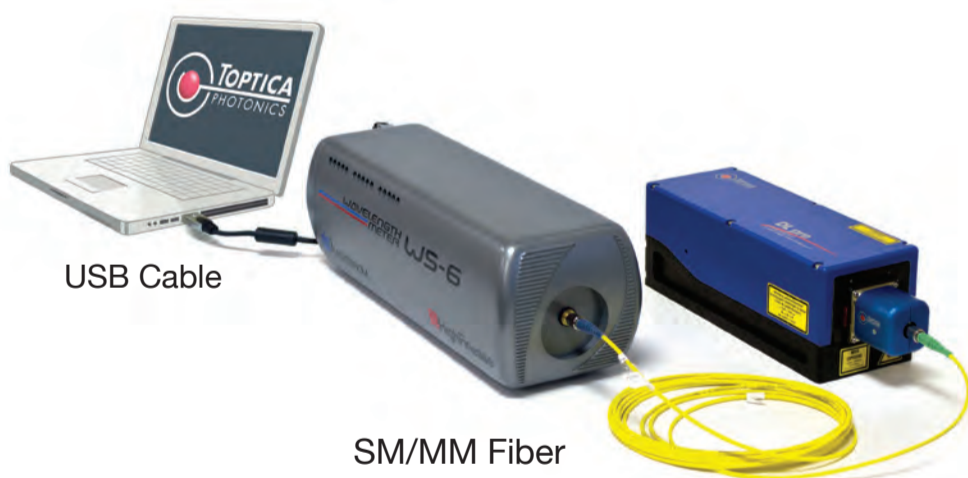
Custom Install: For advanced users desiring custom settings. Follow prompts

2 Connect Wavelength Meter to Computer



USB Cable

3 Connect Light Source to Wavelength Meter



USB Cable

SM/MM Fiber

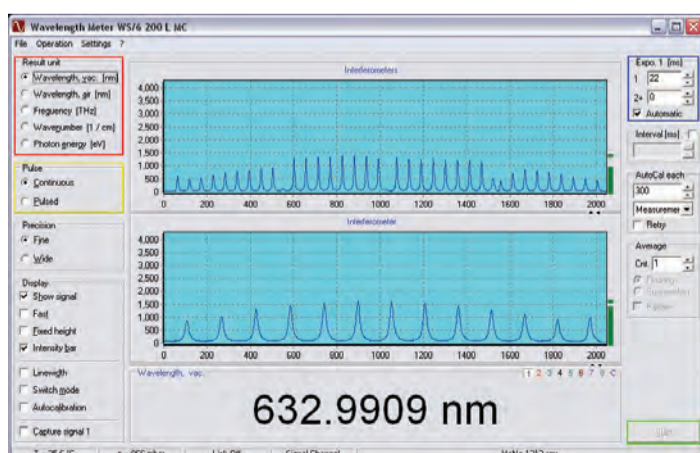
Note: If using SM fiber, make sure FC/PC (blue end) connects to the wavelength meter and the FC/APC (green end) connects to the light source

4 Start Software

Run Desktop Shortcut

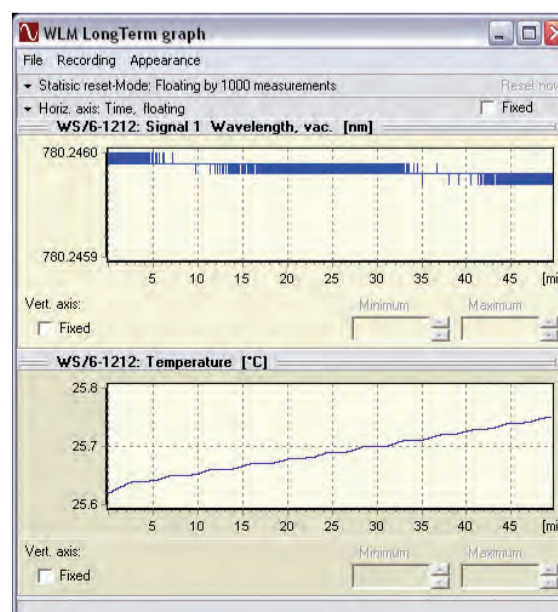


5 Start Measurement



- Select the preferred unit
- Select pulsed or continuous
- Start the measurement
- Adjust the exposure manually or select "Automatic"

6 Long-term Graph



(Automatically started with measurement)

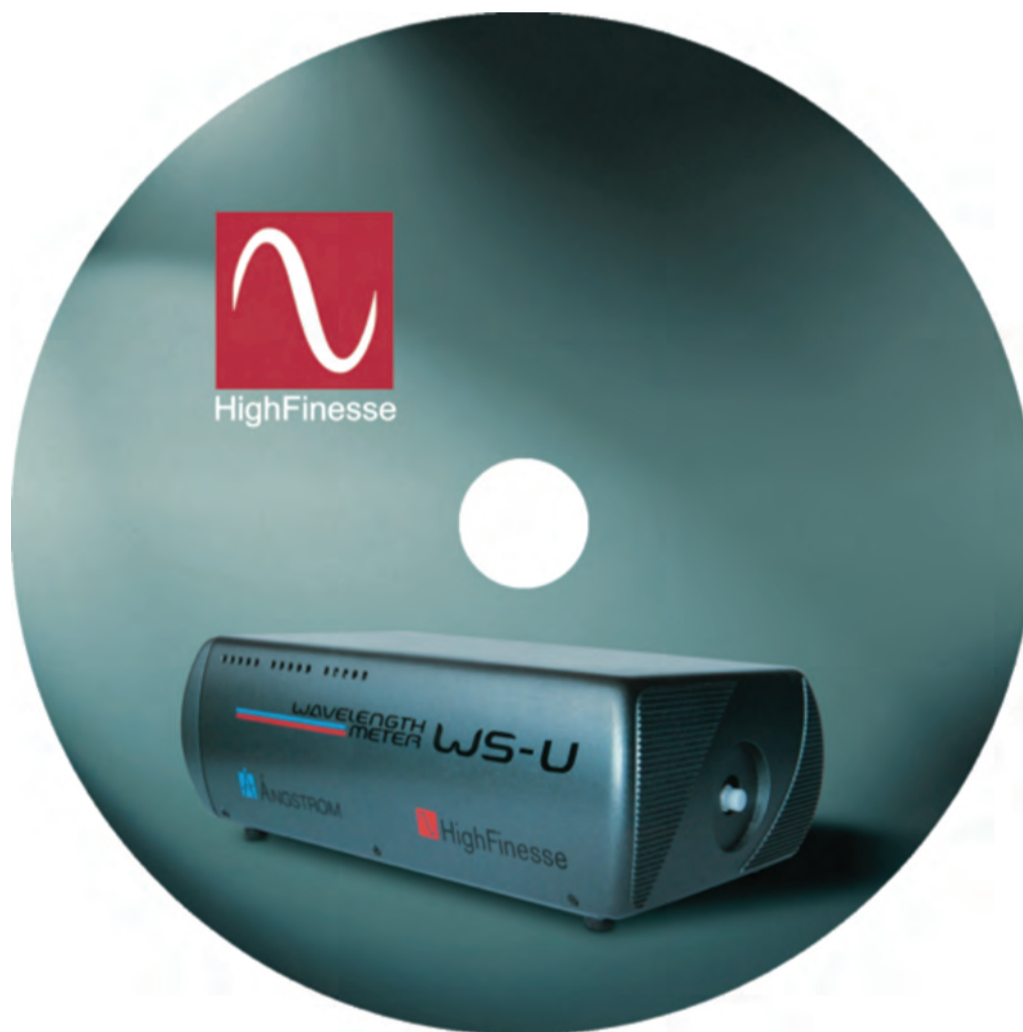
Save long-term data on your Computer

File -> Save As...

Wavelength Meter WS Series

Options:

- MultiChannel option capable of measuring several lasers in parallel, reducing the need for additional equipment
- Option L allows for simultaneous wavelength and linewidth measurement, saving time and equipment
- Option PID: Stabilization to random wavelength permitting the PID to drive the laser



TOPTICA Photonics, Inc
1286 Blossom Dr
Victor, NY 14564
USA

Phone (585) 657-6663
Fax (877) 277-9897

Email service@toptica-usa.com
www.toptica.com

HighFinesse GmbH
Auf der Morgenstelle 14 D
72076 Tübingen
Germany

Phone +49 (0) 7071-96 8515
Fax +49 (0) 7071-96 8517

Email info@highfinesse.com
www.highfinesse.com