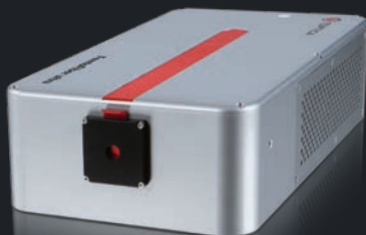


reliable.

High-power ultrafast fiber lasers

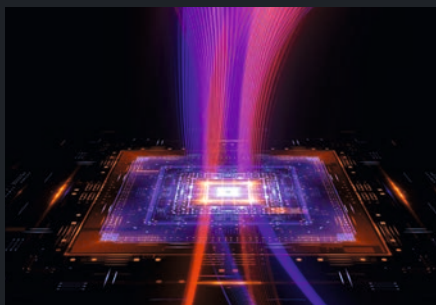
780 nm

Femtosecond Fiber Laser



- Powering the fastest 2-Photon Lithography on the market
- Super-compact cold laser head
- Full software controllable system
- Optional internal AOM

Large installed OEM base with global service!



learn more...



www.toptica.com/reliable

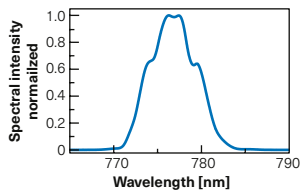
FemtoFiber ultra 780



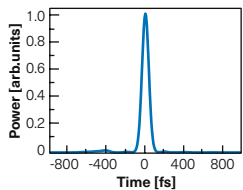
DANGER – VISIBLE AND INVISIBLE LASER RADIATION, AVOID EYE OR SKIN EXPOSURE TO DIRECT OR SCATTERED RADIATION, CLASS 4 LASER PRODUCT, EN60825-1:2014

Laser Specifications*	SP (Short-pulse)	Standard	HP (High-power)
Center wavelength	780 nm		
Pulse duration	< 100 fs	< 150 fs	< 170 fs
Average output power [w. AOM, optional]	> 1000 [800] mW	> 1000 [1000] mW	> 1500 [1200] mW
Repetition rate	80 MHz		
Motorized dispersion precompensation (GDD)	-30,000 .. 0 fs ²		
Beam shape	TEM ₀₀ , M ² < 1.3	TEM ₀₀ , M ² < 1.2	
Linear polarization	> 100:1, vertical		
Output coupling	Free space		
Dimensions laser head	77 x 165 x 300 mm ³ (H x W x D)		
Weight laser head	< 5 kg		
Dimensions supply unit	131 x 484 x 600 mm ³		
Weight supply unit	< 20 kg		
Power supply	24 V DC (AC power supply included)		
Power consumption	< 150 W		
PC Interface	Ethernet, USB		
Environment temperature	19 - 25 °C (operating), 0 - 40 °C (storage and transport)		
Environment humidity	Non-condensing		

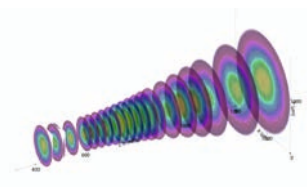
* Subject to change without notice



Typical emission spectrum (linear)



Retrieved pulse shape



M² beam propagation with < 1.1 for both X/Y axis and symmetrical shape